

C:\Users\mimi72635\OneDrive - Mott MacDonald\PCCA_Channel_Deepening\Map\Figures\SJI_Fig8_WetlandDelineation_Map_8x11.mxd

Date: 1/12/2022 9:10:17 AM

Notes:
 Data Sources:
 PCCA Site Data
 Mott MacDonald Delineation
 All Pictometry (acquired 1/26/21)
 ESRI World Imagery Layer
 (acquired 9/20/20)

<ul style="list-style-type: none"> ● High Tide Line ● Mean High Water ■ Upland Dataform ■ Wetland Dataform — Mosaic Transect — Contour - 1 foot ■ Survey Area 	<p>WETLAND DELINEATION</p> <ul style="list-style-type: none"> ■ E1UBL ■ E2USN ■ E2EM1N1 ■ M1UBL ■ M2USN ■ PEM1C ■ PEM1C1 ■ PEM1C/UPL ■ PUB1H □ UPL
--	---

**PORT OF CORPUS CHRISTI AUTHORITY
 CHANNEL DEEPENING PROJECT
 SJI - FIGURE 8**

Site SJI Wetland Delineation Map Series - LiDAR Contours
 Aransas County, TX

0 100 200 400 Feet

<p>ABSOLUTE SCALE: 1:2,400</p> <p>REFERENCE SCALE: 1 IN = 200 feet</p>
--

M M
 MOTT
 MACDONALD
 5295 S. Commerce Dr. Ste. 500
 Salt Lake City, UT 84107
 Ph: (801) 559-2716

<p>Drawn By: JLM Rev. Date: 12/20/2021</p>	<p>Page: 18 of 30</p>
---	-----------------------



Notes:
 Data Sources:
 PCCA Site Data
 Mott MacDonald Delineation
 All Pictometry (acquired 1/26/21)
 ESRI World Imagery Layer
 (acquired 9/20/20)

WETLAND DELINEATION	
● High Tide Line	■ E1UBL
● Mean High Water	■ E2USN
■ Upland Dataform	■ E2EM1N1
■ Wetland Dataform	■ M1UBL
■ Mosaic Transect	■ M2USN
— Contour - 1 foot	■ PEM1C
■ Survey Area	■ PEM1C1
	■ PEM1C/UPL
	■ PUB1H
	□ UPL

**PORT OF CORPUS CHRISTI AUTHORITY
 CHANNEL DEEPENING PROJECT
 SJI - FIGURE 8**

Site SJI Wetland Delineation Map Series - LiDAR Contours
 Aransas County, TX

0 100 200 400 Feet

ABSOLUTE SCALE:
1:2,400

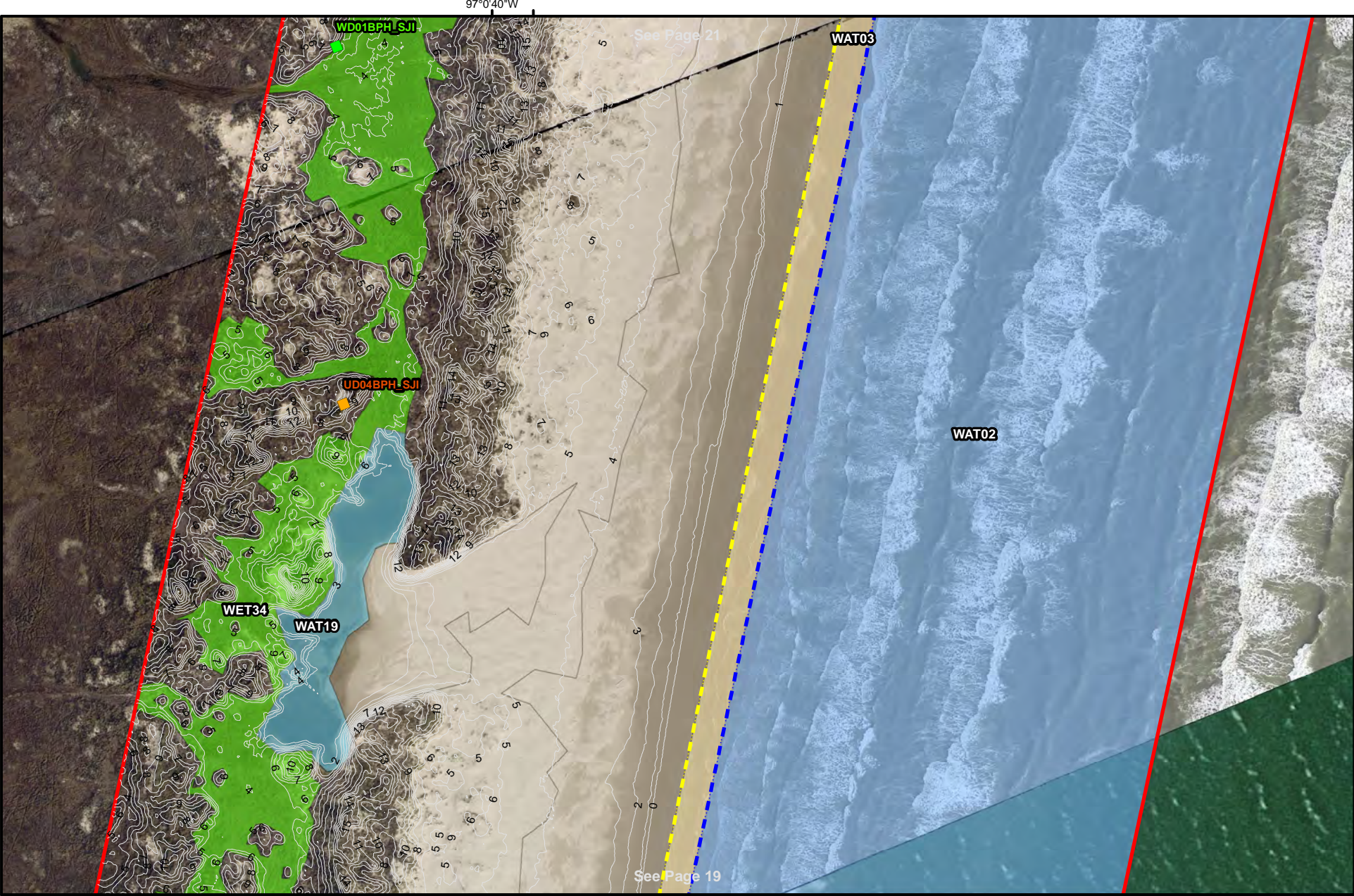
REFERENCE SCALE:
1 IN = 200 feet

M
MOTT
MACDONALD
 5295 S. Commerce Dr. Ste. 500
 Salt Lake City, UT 84107
 Ph: (801) 559-2716

Drawn By: JLM
 Rev. Date: 12/20/2021

Page: 19 of 30

Date: 1/12/2022 9:10:17 AM C:\Users\mim72635\OneDrive - Mott MacDonald\PCCA\Channel Deepening\MapFigures\SJI_Fig8_WetlandDelineation_Map_8x11.mxd



Notes:
 Data Sources:
 PCCA Site Data
 Mott MacDonald Delineation
 All Pictometry (acquired 1/26/21)
 ESRI World Imagery Layer
 (acquired 9/20/20)

WETLAND DELINEATION	
● High Tide Line	E1UBL
● Mean High Water	E2USN
■ Upland Dataform	E2EM1N1
■ Wetland Dataform	M1UBL
■ Mosaic Transect	M2USN
— Contour - 1 foot	PEM1C
■ Survey Area	PEM1C1
	PEM1C/UPL
	PUB1H
	UPL

**PORT OF CORPUS CHRISTI AUTHORITY
 CHANNEL DEEPENING PROJECT
 SJI - FIGURE 8**

Site SJI Wetland Delineation Map Series - LiDAR Contours
 Aransas County, TX

0 100 200 400 Feet

ABSOLUTE SCALE:
1:2,400

REFERENCE SCALE:
1 IN = 200 feet

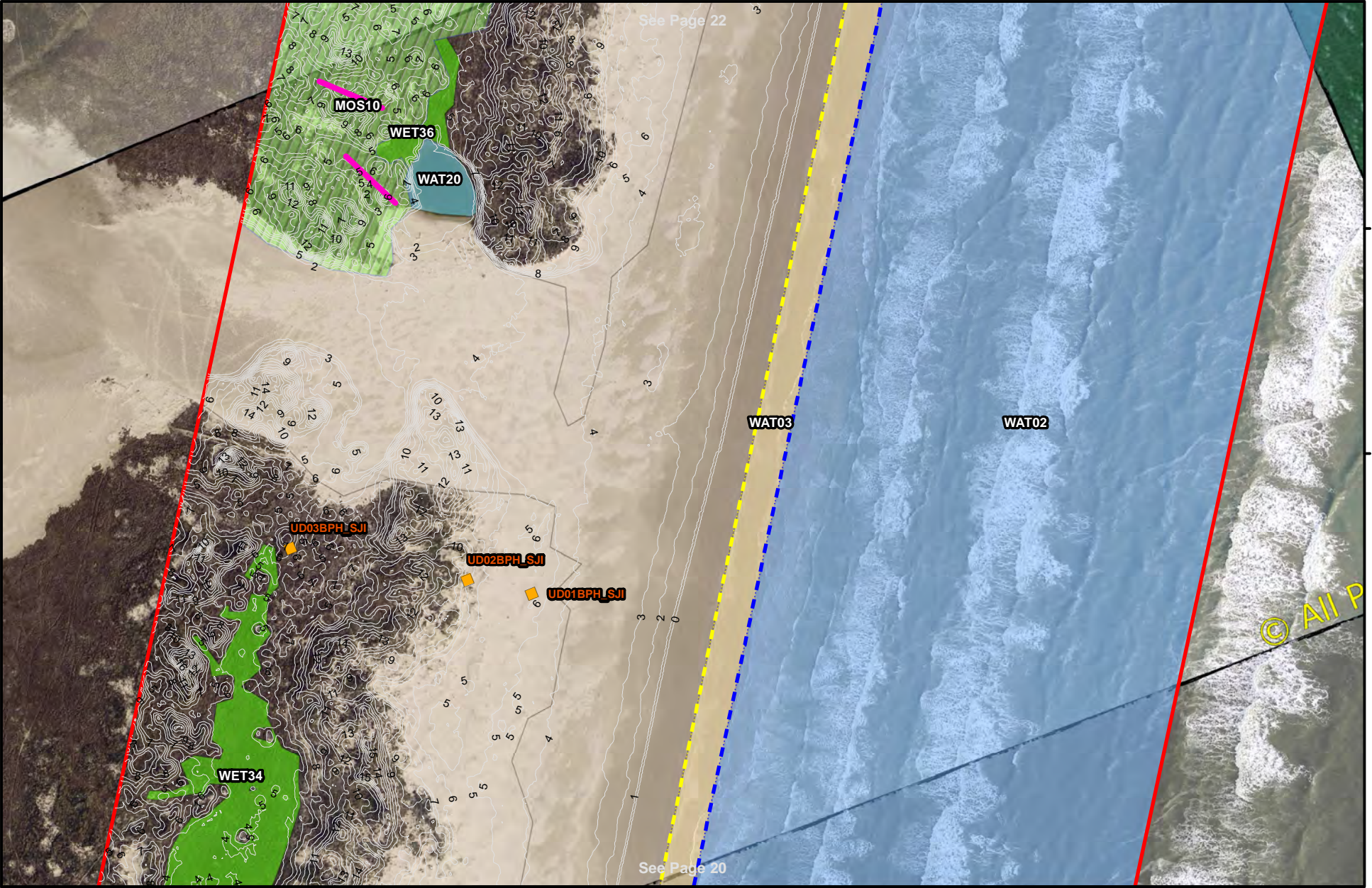
M
MOTT
MACDONALD
 5295 S. Commerce Dr. Ste. 500
 Salt Lake City, UT 84107
 Ph: (801) 559-2716

Drawn By: JLM
 Rev. Date: 12/20/2021

Page:20 of 30

See Page 22

See Page 20



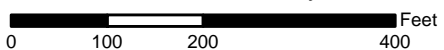
C:\Users\mim72635\OneDrive - Mott MacDonald\PCCA_Channel_Deepening\MapFigures\SJI_Fig8_WetlandDelineation_Map_8x11.mxd
Date: 1/12/2022 9:10:17 AM

Notes:
 Data Sources:
 PCCA Site Data
 Mott MacDonald Delineation
 All Pictometry (acquired 1/26/21)
 ESRI World Imagery Layer (acquired 9/20/20)

WETLAND DELINEATION	
● High Tide Line	E1UBL
● Mean High Water	E2USN
■ Upland Dataform	E2EM1N1
■ Wetland Dataform	M1UBL
■ Mosaic Transect	M2USN
— Contour - 1 foot	PEM1C
■ Survey Area	PEM1C1
	PEM1C/UPL
	PUB1H
	UPL

**PORT OF CORPUS CHRISTI AUTHORITY
 CHANNEL DEEPENING PROJECT
 SJI - FIGURE 8**

Site SJI Wetland Delineation Map Series - LiDAR Contours
 Aransas County, TX



M
M
 MOTT
 MACDONALD
 5295 S. Commerce Dr. Ste. 500
 Salt Lake City, UT 84107
 Ph: (801) 559-2716

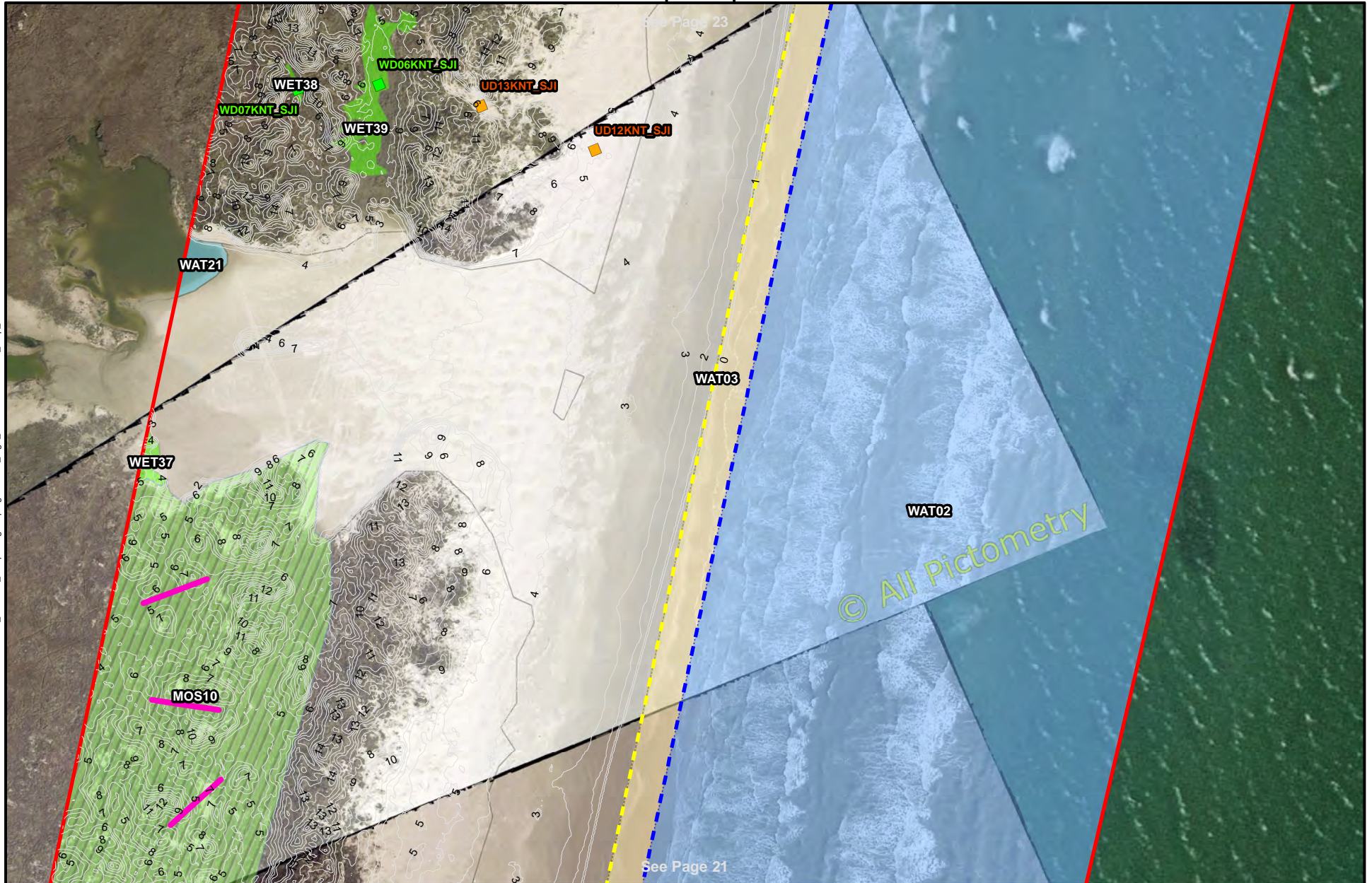
ABSOLUTE SCALE:
 1:2,400
 REFERENCE SCALE:
 1 IN = 200 feet

Drawn By: JLM
 Rev. Date: 12/20/2021
 Page:21 of 30

© All P

See Page 23

See Page 21



C:\Users\mim72638\OneDrive - Mott MacDonald\PCCA_Channel_Deepening\MapFigures\SJI_Fig8_WetlandDelineation_Map_8x11.mxd

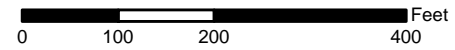
Date: 1/12/2022 9:10:17 AM

Notes:
 Data Sources:
 PCCA Site Data
 Mott MacDonald Delineation
 All Pictometry (acquired 1/26/21)
 ESRI World Imagery Layer
 (acquired 9/20/20)

WETLAND DELINEATION	
High Tide Line	E1UBL
Mean High Water	E2USN
Upland Dataform	E2EM1N1
Wetland Dataform	M1UBL
Mosaic Transect	M2USN
Contour - 1 foot	PEM1C
Survey Area	PEM1C1
	PEM1C/UPL
	PUB1H
	UPL

PORT OF CORPUS CHRISTI AUTHORITY CHANNEL DEEPENING PROJECT SJI - FIGURE 8

Site SJI Wetland Delineation Map Series - LiDAR Contours
 Aransas County, TX



M
M
 MOTT
 MACDONALD
 5295 S. Commerce Dr. Ste. 500
 Salt Lake City, UT 84107
 Ph: (801) 559-2716

ABSOLUTE SCALE:
 1:2,400

REFERENCE SCALE:
 1 IN = 200 feet

Drawn By: JLM
 Rev. Date: 12/20/2021

Page:22 of 30

C:\Users\smi72635\OneDrive - Mott MacDonald\PCCA_Channel_Deepening\MapFigures\SJI_Fig8_WetlandDelineation_Map_8x11.mxd

Date: 1/12/2022 9:10:17 AM



Notes:
 Data Sources:
 PCCA Site Data
 Mott MacDonald Delineation
 All Pictometry (acquired 1/26/21)
 ESRI World Imagery Layer (acquired 9/20/20)

WETLAND DELINEATION	
High Tide Line	E1UBL
Mean High Water	E2USN
Upland Dataform	E2EM1N1
Wetland Dataform	M1UBL
Mosaic Transect	M2USN
Contour - 1 foot	PEM1C
Survey Area	PEM1C1
	PEM1C/UPL
	PUB1H
	UPL

**PORT OF CORPUS CHRISTI AUTHORITY
 CHANNEL DEEPENING PROJECT
 SJI - FIGURE 8**

Site SJI Wetland Delineation Map Series - LiDAR Contours
 Aransas County, TX

0 100 200 400 Feet

ABSOLUTE SCALE:
1:2,400

REFERENCE SCALE:
1 IN = 200 feet

M
M
 MOTT
 MACDONALD
 5295 S. Commerce Dr. Ste. 500
 Salt Lake City, UT 84107
 Ph: (801) 559-2716

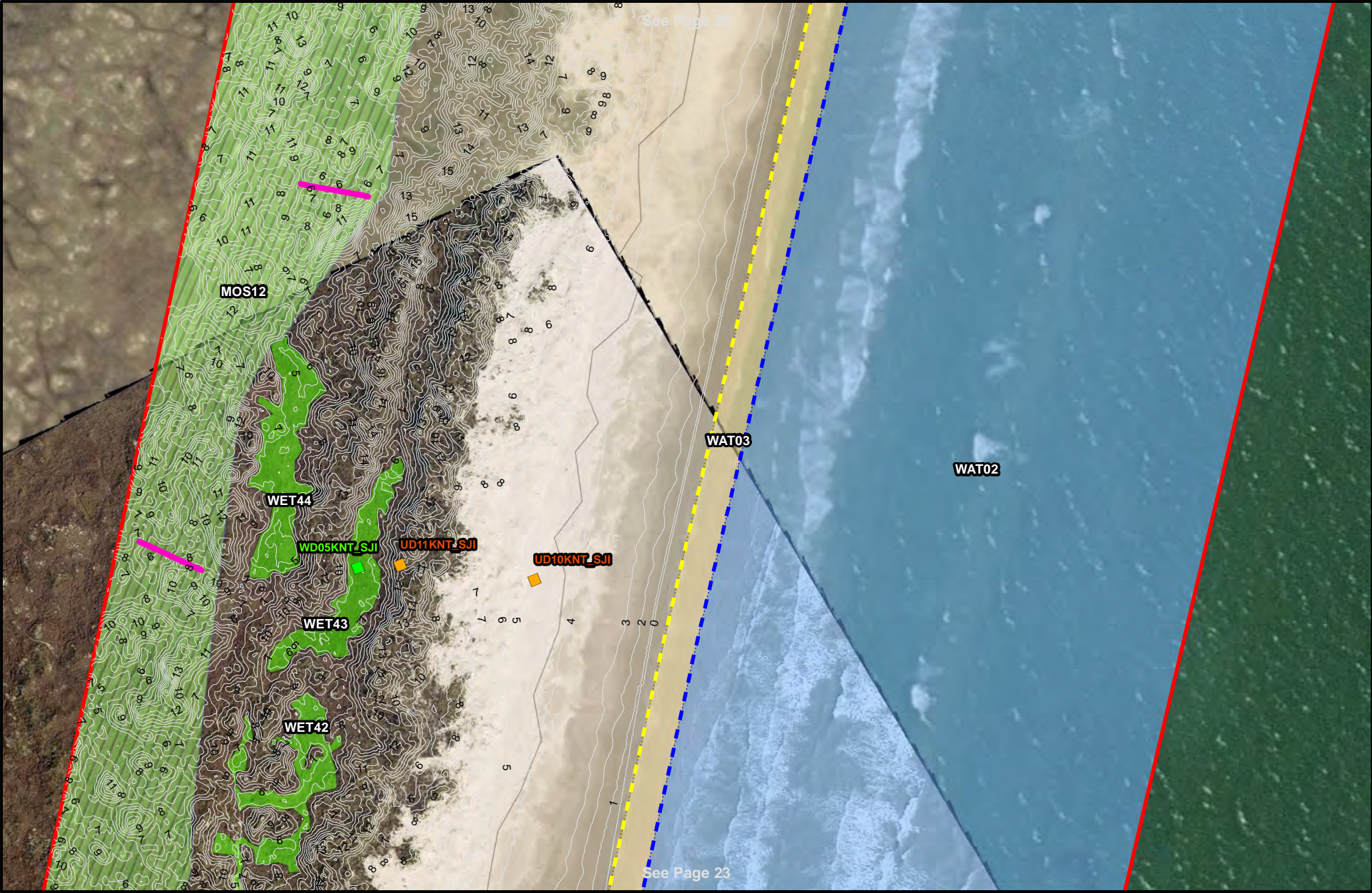
Drawn By: JLM
 Rev. Date: 12/20/2021

Page:23 of 30

© All Pic

See Page 25

See Page 23



Date: 1/12/2022 9:10:17 AM C:\Users\mim172635\OneDrive - Mott MacDonald\PCCA_Channel_Deepening\MapFigures\SJI_Fig8_WetlandDelineation_Map_8x11.mxd

Notes:
 Data Sources:
 PCCA Site Data
 Mott MacDonald Delineation
 All Pictometry (acquired 1/26/21)
 ESRI World Imagery Layer (acquired 9/20/20)

WETLAND DELINEATION	
● High Tide Line	E1UBL
● Mean High Water	E2USN
■ Upland Dataform	E2EM1N1
■ Wetland Dataform	M1UBL
■ Mosaic Transect	M2USN
— Contour - 1 foot	PEM1C
■ Survey Area	PEM1C1
	PEM1C/UPL
	PUB1H
	UPL

**PORT OF CORPUS CHRISTI AUTHORITY
 CHANNEL DEEPENING PROJECT
 SJI - FIGURE 8**

Site SJI Wetland Delineation Map Series - LiDAR Contours
 Aransas County, TX

0 100 200 400 Feet

ABSOLUTE SCALE:
1:2,400

REFERENCE SCALE:
1 IN = 200 feet

M
MOTT
MACDONALD
 5295 S. Commerce Dr. Ste. 500
 Salt Lake City, UT 84107
 Ph: (801) 559-2716

Drawn By: JLM
 Rev. Date: 12/20/2021

Page:24 of 30



Notes:
 Data Sources:
 PCCA Site Data
 Mott MacDonald Delineation
 All Pictometry (acquired 1/26/21)
 ESRI World Imagery Layer
 (acquired 9/20/20)

WETLAND DELINEATION	
Yellow dashed line	High Tide Line
Blue dashed line	Mean High Water
Orange shaded area	Upland Dataform
Green shaded area	Wetland Dataform
Pink line	Mosaic Transect
White line	Contour - 1 foot
Red outline	Survey Area
Blue shaded area	E1UBL
Yellow shaded area	E2USN
Light green shaded area	E2EM1N1
Light blue shaded area	M1UBL
Light yellow shaded area	M2USN
Light green shaded area	PEM1C
Light green shaded area	PEM1C1
Light green shaded area	PEM1C/UPL
Light blue shaded area	PUB1H
White shaded area	UPL

**PORT OF CORPUS CHRISTI AUTHORITY
 CHANNEL DEEPENING PROJECT
 SJI - FIGURE 8**

Site SJI Wetland Delineation Map Series - LiDAR Contours
 Aransas County, TX

0 100 200 400 Feet

ABSOLUTE SCALE:
1:2,400

REFERENCE SCALE:
1 IN = 200 feet

M M
MOTT MACDONALD
 5295 S. Commerce Dr. Ste. 500
 Salt Lake City, UT 84107
 Ph: (801) 559-2716

Drawn By: JLM
 Rev. Date: 12/20/2021

Page:25 of 30

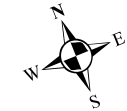
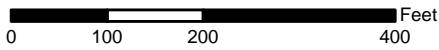


Notes:
 Data Sources:
 PCCA Site Data
 Mott MacDonald Delineation
 All Pictometry (acquired 1/26/21)
 ESRI World Imagery Layer
 (acquired 9/20/20)

WETLAND DELINEATION	
High Tide Line	E1UBL
Mean High Water	E2USN
Upland Dataform	E2EM1N1
Wetland Dataform	M1UBL
Mosaic Transect	M2USN
Contour - 1 foot	PEM1C
Survey Area	PEM1C1
	PEM1C/UPL
	PUB1H
	UPL

**PORT OF CORPUS CHRISTI AUTHORITY
 CHANNEL DEEPENING PROJECT
 SJI - FIGURE 8**

Site SJI Wetland Delineation Map Series - LiDAR Contours
 Aransas County, TX



M
MOTT
MACDONALD
 5295 S. Commerce Dr. Ste. 500
 Salt Lake City, UT 84107
 Ph: (801) 559-2716

ABSOLUTE SCALE:
 1:2,400
 REFERENCE SCALE:
 1 IN = 200 feet

Drawn By: JLM
 Rev. Date: 12/20/2021
 Page:26 of 30

See Page 28

See Page 26

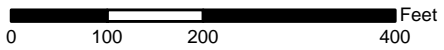


Notes:
 Data Sources:
 PCCA Site Data
 Mott MacDonald Delineation
 All Pictometry (acquired 1/26/21)
 ESRI World Imagery Layer
 (acquired 9/20/20)

WETLAND DELINEATION	
● High Tide Line	E1UBL
● Mean High Water	E2USN
■ Upland Dataform	E2EM1N1
■ Wetland Dataform	M1UBL
■ Mosaic Transect	M2USN
— Contour - 1 foot	PEM1C
■ Survey Area	PEM1C1
	PEM1C/UPL
	PUB1H
	UPL

**PORT OF CORPUS CHRISTI AUTHORITY
 CHANNEL DEEPENING PROJECT
 SJI - FIGURE 8**

Site SJI Wetland Delineation Map Series - LiDAR Contours
 Aransas County, TX



M
M
 MOTT
 MACDONALD
 5295 S. Commerce Dr. Ste. 500
 Salt Lake City, UT 84107
 Ph: (801) 559-2716

ABSOLUTE SCALE:
 1:2,400
 REFERENCE SCALE:
 1 IN = 200 feet

Drawn By: JLM
 Rev. Date: 12/20/2021
 Page:27 of 30



C:\Users\mim172658\OneDrive - Mott MacDonald\PCCA_Channel_Deepening\MapFigures\SJI_Fig8_WetlandDelineation_Map_8x11.mxd

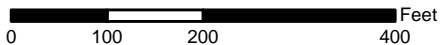
Date: 1/12/2022 9:10:17 AM

Notes:
 Data Sources:
 PCCA Site Data
 Mott MacDonald Delineation
 All Pictometry (acquired 1/26/21)
 ESRI World Imagery Layer
 (acquired 9/20/20)

WETLAND DELINEATION	
● High Tide Line	E1UBL
● Mean High Water	E2USN
● Upland Dataform	E2EM1N1
● Wetland Dataform	M1UBL
— Mosaic Transect	M2USN
— Contour - 1 foot	PEM1C
■ Survey Area	PEM1C1
	PEM1C/UPL
	PUB1H
	UPL

**PORT OF CORPUS CHRISTI AUTHORITY
 CHANNEL DEEPENING PROJECT
 SJI - FIGURE 8**

Site SJI Wetland Delineation Map Series - LiDAR Contours
 Aransas County, TX



M
MOTT
MACDONALD
 5295 S. Commerce Dr. Ste. 500
 Salt Lake City, UT 84107
 Ph: (801) 559-2716

ABSOLUTE SCALE:
 1:2,400

Drawn By: JLM
 Rev. Date: 12/20/2021

REFERENCE SCALE:
 1 IN = 200 feet

Page:28 of 30




Notes:
 Data Sources:
 PCCA Site Data
 Mott MacDonald Delineation
 All Pictometry (acquired 1/26/21)
 ESRI World Imagery Layer
 (acquired 9/20/20)

WETLAND DELINEATION	
● High Tide Line	■ E1UBL
● Mean High Water	■ E2USN
● Upland Dataform	■ E2EM1N1
■ Wetland Dataform	■ M1UBL
■ Mosaic Transect	■ M2USN
— Contour - 1 foot	■ PEM1C
■ Survey Area	■ PEM1C1
	■ PEM1C/UPL
	■ PUB1H
	■ UPL

**PORT OF CORPUS CHRISTI AUTHORITY
 CHANNEL DEEPENING PROJECT
 SJI - FIGURE 8**

Site SJI Wetland Delineation Map Series - LiDAR Contours
 Aransas County, TX

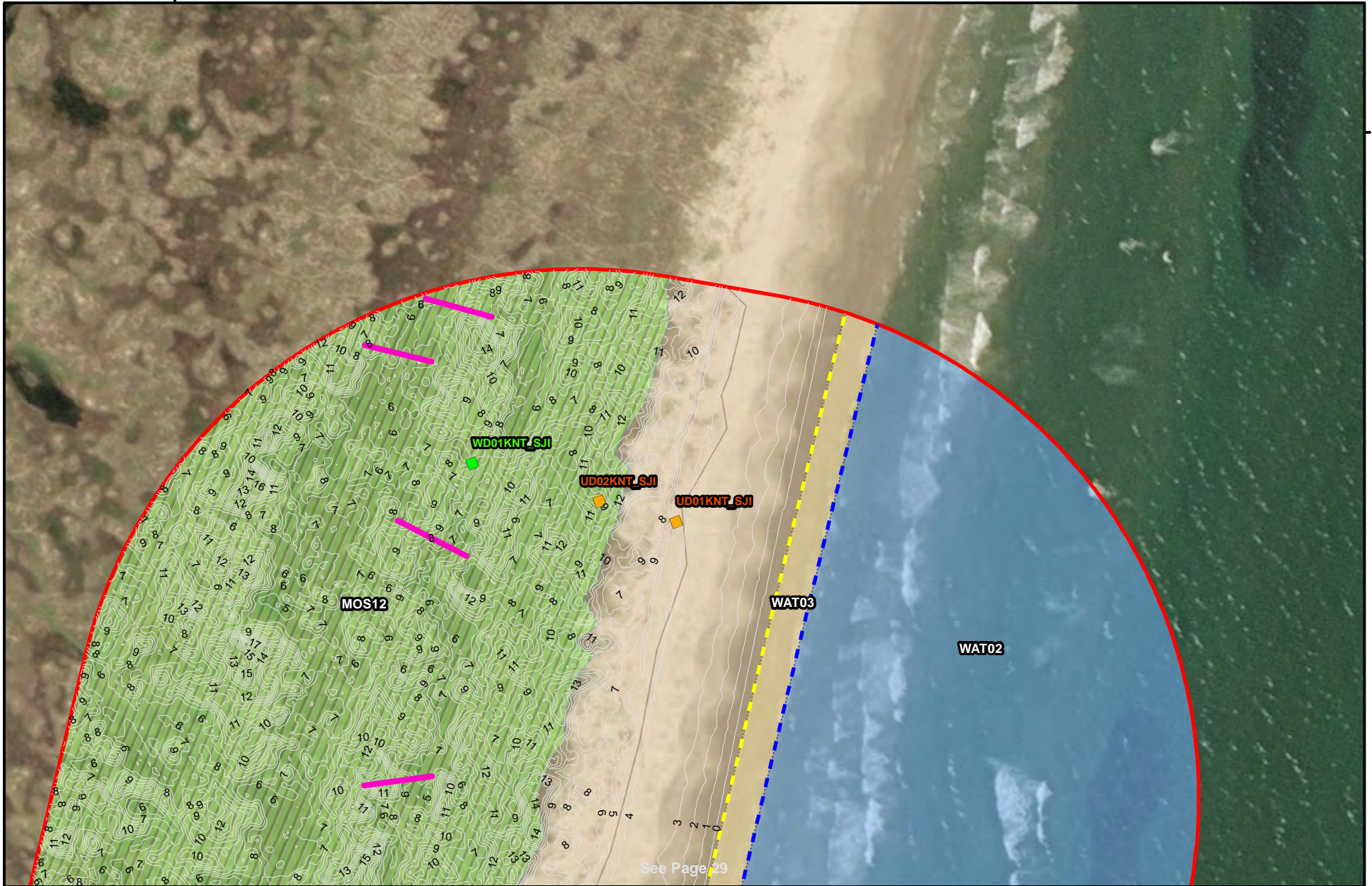
0 100 200 400 Feet


ABSOLUTE SCALE:
 1:2,400
REFERENCE SCALE:
 1 IN = 200 feet

M
MOTT
MACDONALD
 5295 S. Commerce Dr. Ste. 500
 Salt Lake City, UT 84107
 Ph: (801) 559-2716

Drawn By: JLM
 Rev. Date: 12/20/2021
 Page: 29 of 30

C:\Users\mimi726385\OneDrive - Mott MacDonald\PCCA\Channel_Deepening\MapFigures\SJI_Fig8_WetlandDelineation_Map_8x11.mxd



Date: 1/12/2022 9:10:17 AM

Notes:
 Data Sources:
 PCCA Site Data
 Mott MacDonald Delineation
 All Pictometry (acquired 1/26/21)
 ESRI World Imagery Layer
 (acquired 9/20/20)


WETLAND DELINEATION	
● High Tide Line	■ E1UBL
● Mean High Water	■ E2USN
■ Upland Dataform	■ E2EM1N1
■ Wetland Dataform	■ M1UBL
■ Mosaic Transect	■ M2USN
— Contour - 1 foot	■ PEM1C
■ Survey Area	■ PEM1C1
	■ PEM1C/UPL
	■ PUB1H
	■ UPL

**PORT OF CORPUS CHRISTI AUTHORITY
 CHANNEL DEEPENING PROJECT
 SJI - FIGURE 8**

Site SJI Wetland Delineation Map Series - LiDAR Contours
 Aransas County, TX

See Page 29

0 100 200 400 Feet

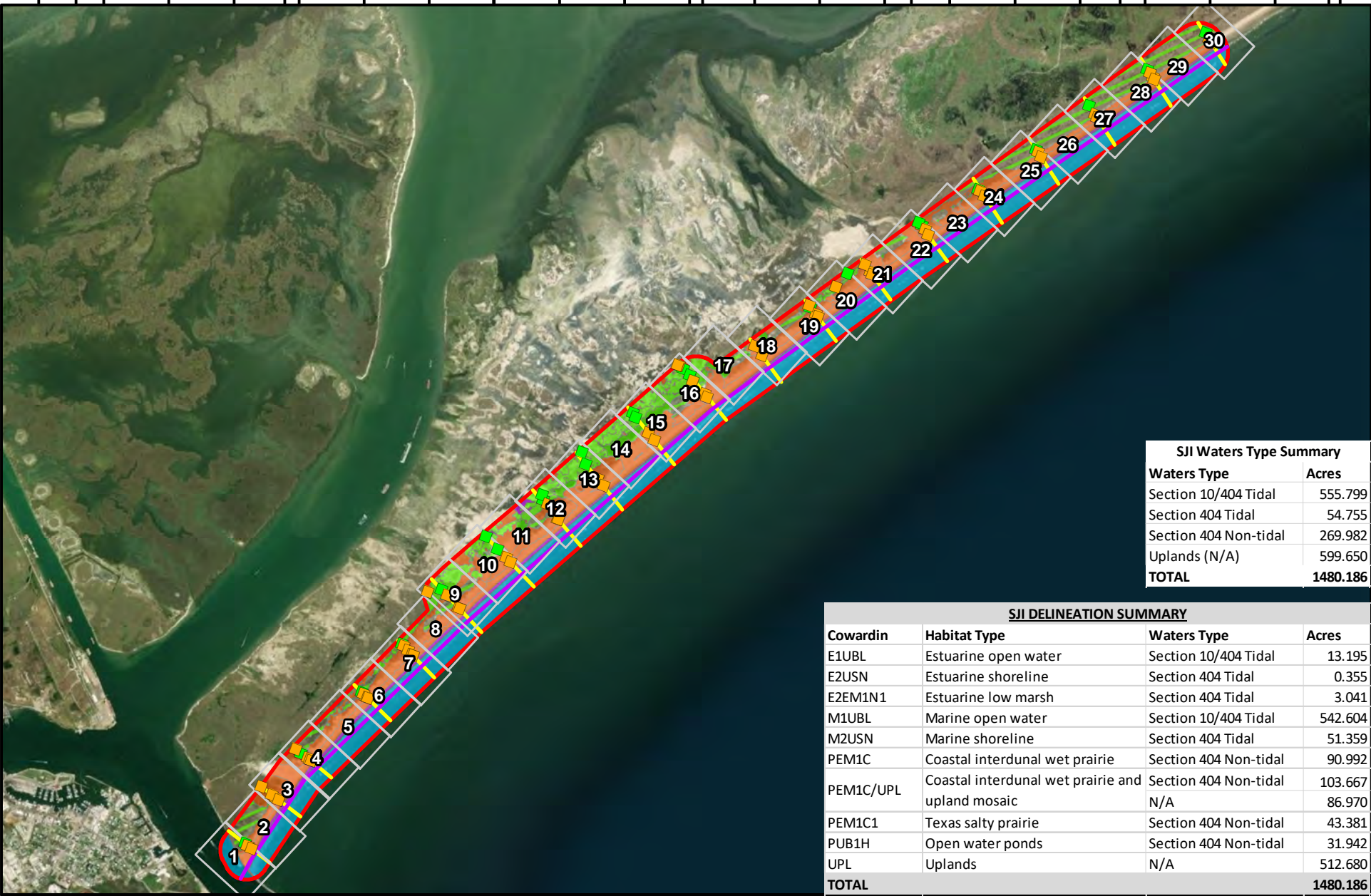

 ABSOLUTE SCALE:
 1:2,400
 REFERENCE SCALE:
 1 IN = 200 feet

M
M
 MOTT
 MACDONALD
 5295 S. Commerce Dr. Ste. 500
 Salt Lake City, UT 84107
 Ph: (801) 559-2716

Drawn By: JLM
 Rev. Date: 12/20/2021

Page:30 of 30

C:\Users\mim72635\OneDrive - Mott MacDonald\PCCA_Channel_Deepening\MapFigures\SJI_Fig9_Overview_Map_8x11.mxd



SJI Waters Type Summary	
Waters Type	Acres
Section 10/404 Tidal	555.799
Section 404 Tidal	54.755
Section 404 Non-tidal	269.982
Uplands (N/A)	599.650
TOTAL	1480.186

SJI DELINEATION SUMMARY			
Cowardin	Habitat Type	Waters Type	Acres
E1UBL	Estuarine open water	Section 10/404 Tidal	13.195
E2USN	Estuarine shoreline	Section 404 Tidal	0.355
E2EM1N1	Estuarine low marsh	Section 404 Tidal	3.041
M1UBL	Marine open water	Section 10/404 Tidal	542.604
M2USN	Marine shoreline	Section 404 Tidal	51.359
PEM1C	Coastal interdunal wet prairie	Section 404 Non-tidal	90.992
PEM1C/UPL	Coastal interdunal wet prairie and upland mosaic	N/A	103.667
PEM1C1	Texas salty prairie	Section 404 Non-tidal	86.970
PUB1H	Open water ponds	Section 404 Non-tidal	43.381
UPL	Uplands	N/A	31.942
TOTAL			1480.186

Notes:
 Data Sources:
 PCCA Site Data
 Mott MacDonald Delineation
 ESRI World Imagery Layer

Legend Item	Jurisdiction
Upland Dataform	N/A
Wetland Dataform	N/A
Page Index	N/A
Baseline	Section 10/404 Tidal
Transects	Section 404 Non-tidal
Survey Area	Section 404 Non-tidal Mosaic
	Section 404 Tidal

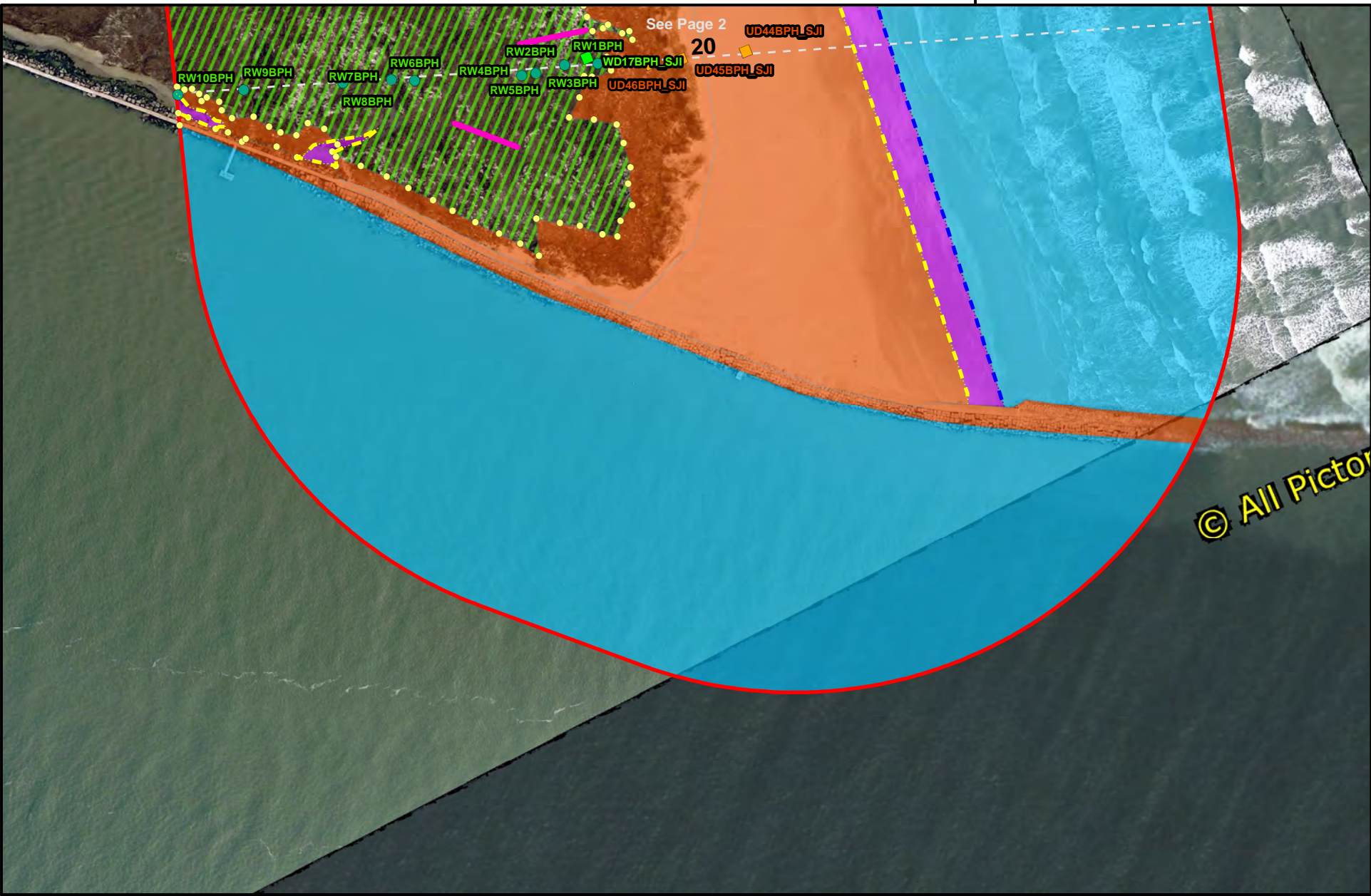
PORT OF CORPUS CHRISTI AUTHORITY
CHANNEL DEEPENING PROJECT
SJI - FIGURE 9
 Site SJI Waters Type Delineation Overview Map
 Aransas County, TX

ABSOLUTE SCALE:
 1:48,000
REFERENCE SCALE:
 1 IN = 4,000 feet

MOTT MACDONALD
 5295 S. Commerce Dr. Ste. 500
 Salt Lake City, UT 84107
 Ph: (801) 559-2716

Drawn By: JLM
 Rev. Date: 12/20/2021

Page: 1 of 1



C:\Users\mimi72635\OneDrive - Mott MacDonald\PCCA_Channel_Deepening\MapFigures\SJI_Fig9_WetlandDelineation_Map_8x11.mxd

Date: 1/12/2022 9:26:53 AM

Notes:
 Data Sources:
 PCCA Site Data
 Mott MacDonald Delineation
 All Pictometry (acquired 1/26/21)
 ESRI World Imagery Layer
 (acquired 9/20/20)

<ul style="list-style-type: none"> • High Tide Line • Mean High Water • Representative Upland • Representative Wetland • Upland Dataform • Wetland Dataform • Wetland Flagging • Mosaic Transect • Transects • Survey Area 	<p>Jurisdiction</p> <ul style="list-style-type: none"> • Section 10/404 Tidal • Section 404 Tidal • Section 404 Non-tidal • Section 404 Non-tidal Mosaic • N/A
--	--

**PORT OF CORPUS CHRISTI AUTHORITY
 CHANNEL DEEPENING PROJECT
 SJI - FIGURE 9**

Site SJI Waters Type Delineation Map Series
 Aransas County, TX

0 100 200 400 Feet

ABSOLUTE SCALE:
1:2,400

REFERENCE SCALE:
1 IN = 200 feet

M M
MOTT MACDONALD
 5295 S. Commerce Dr. Ste. 500
 Salt Lake City, UT 84107
 Ph: (801) 559-2716

Drawn By: JLM
 Rev. Date: 12/20/2021

Page: 1 of 30